



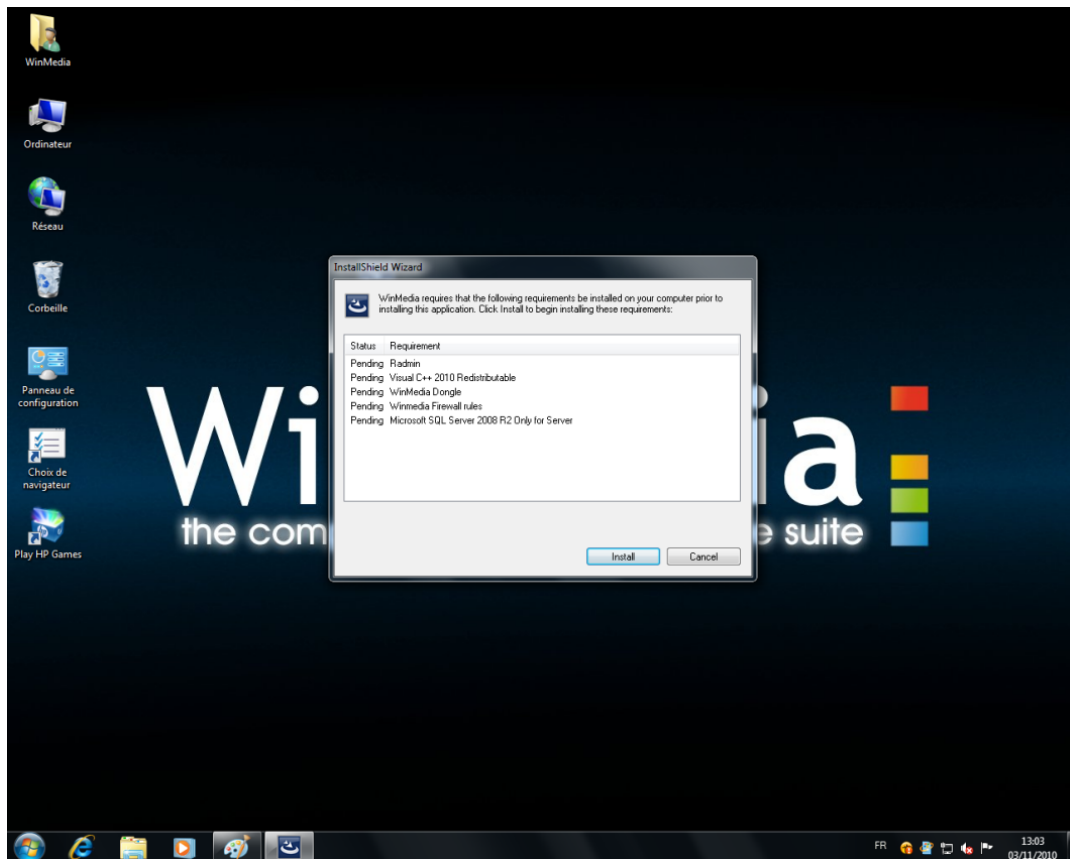
WinMedia Installation for server and SQL SERVER 2008 configuration

Contenu

I – WinMedia setup wizard.....	2
1 – Radmin Installation	2
2 - Installation of Visual Basic 2010.....	5
3 - Installation of WinMedia License dongle driver	5
4 - Installation of WinMedia firewall rules	5
5 - Installation of WinMedia SQL Server 2008 R2	6
6 - WinMedia installation	7
II - SQL Server configuration.....	8
1 – SQL Server Configuration Manager	8
2 - SQL Network configuration	9
3 – SQL script.....	10
4 - SQL Authentication	10
5 – Open Rowset activation.....	12
6 - Create a WinMedia Database in the SQL Server 2008	13

Download the WinMedia setup full server on the WinMedia internet website at : www.winmedia.org

I – WinMedia setup wizard

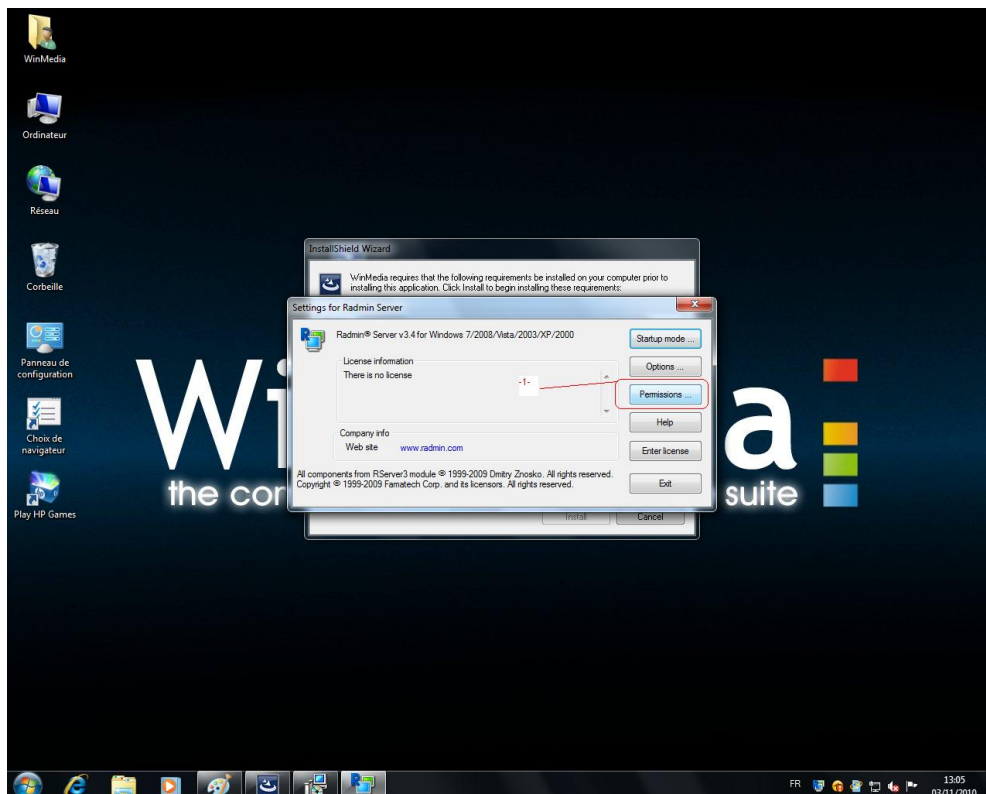


1 – Radmin Installation

Accept the Installation of Radmin software (used by our technical staff to make remote assistance and technical support).

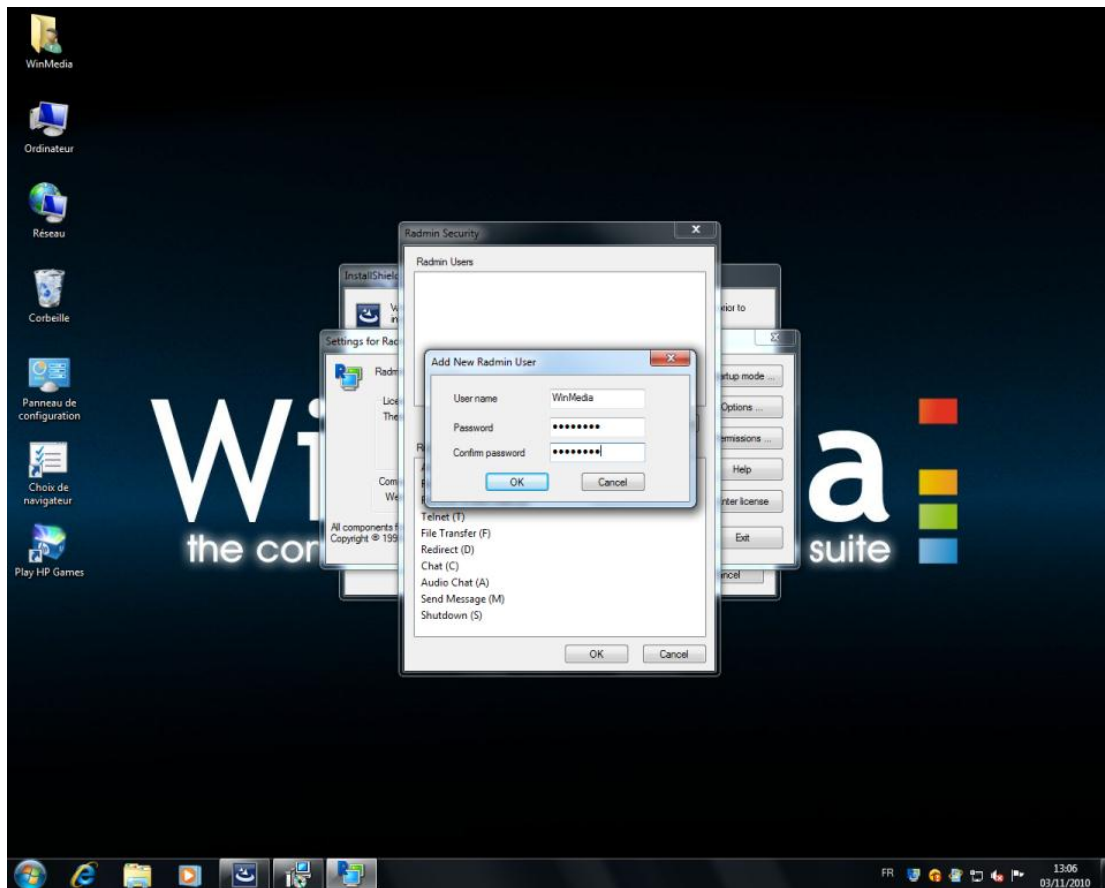


Accept all default options until that screen

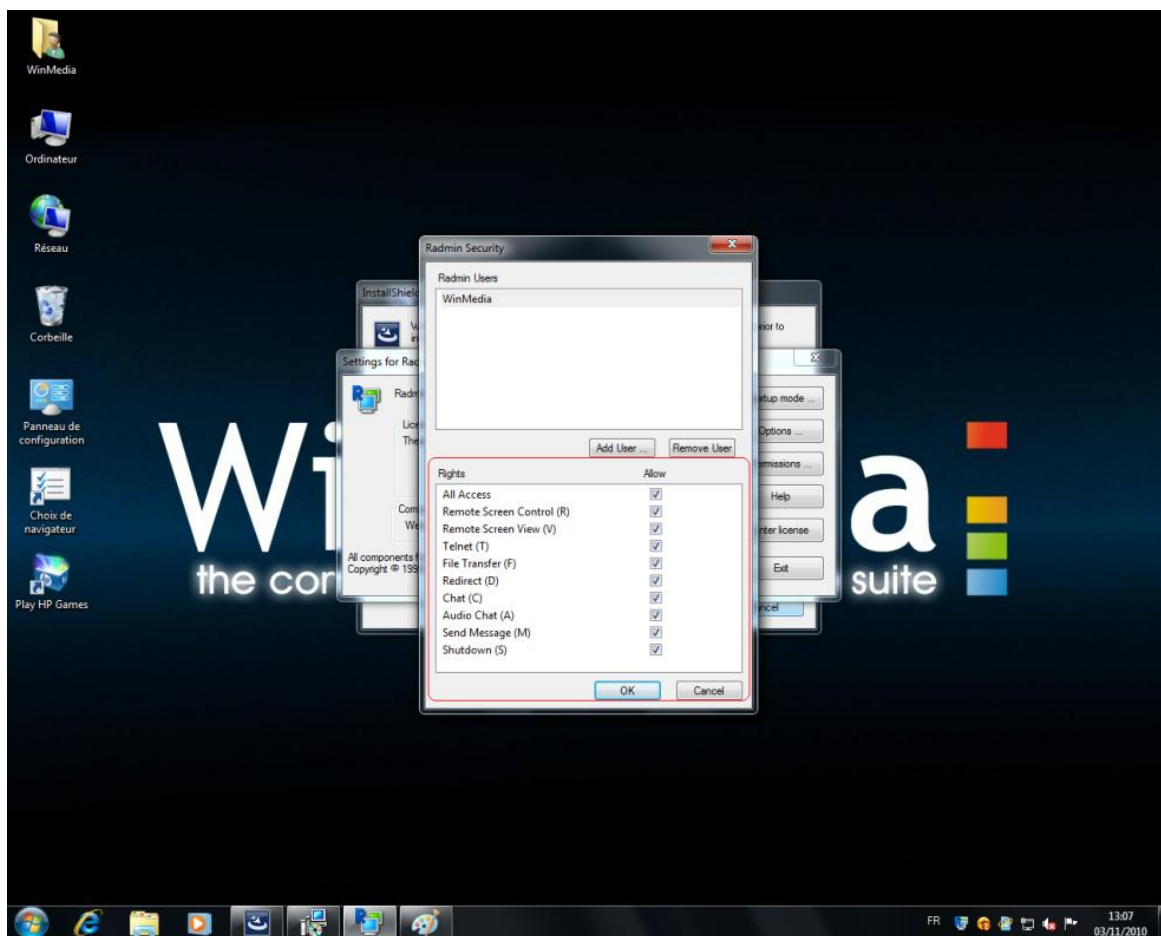


-1- Click on permissions button and add a new user WinMedia with password WinMedia for example.

Send those information to support when you need support

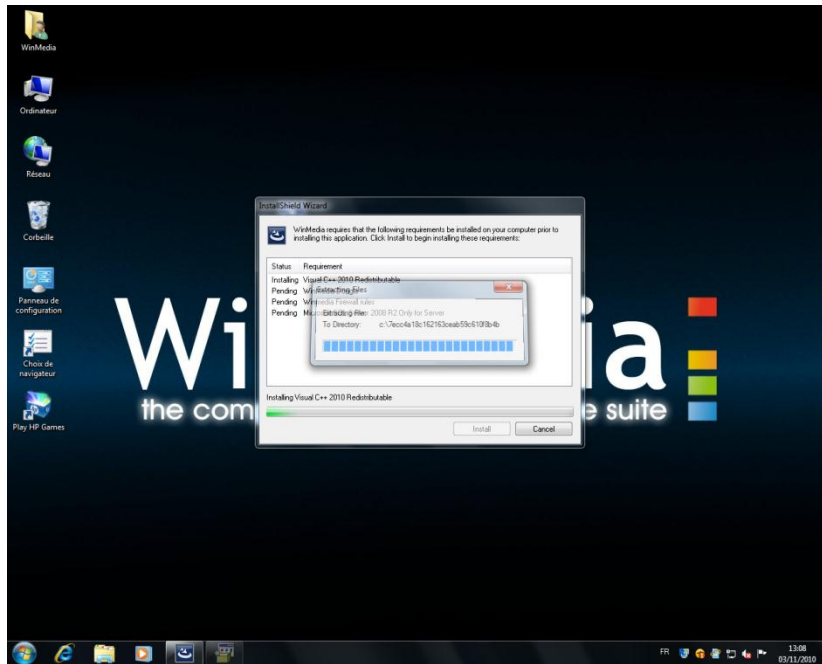


In the following screen, select All access



2 - Installation of Visual Basic 2010

Click on install to start the installation of Visual Basic 2010, accept the end user license agreement and all the default options



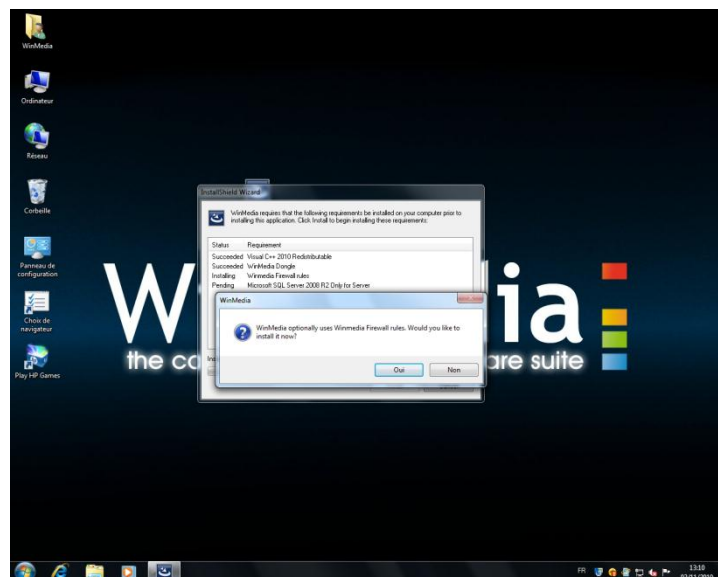
3 - Installation of WinMedia License dongle driver

Click on install to start the installation of WinMedia License dongle driver, accept the end user license agreement and all the default options

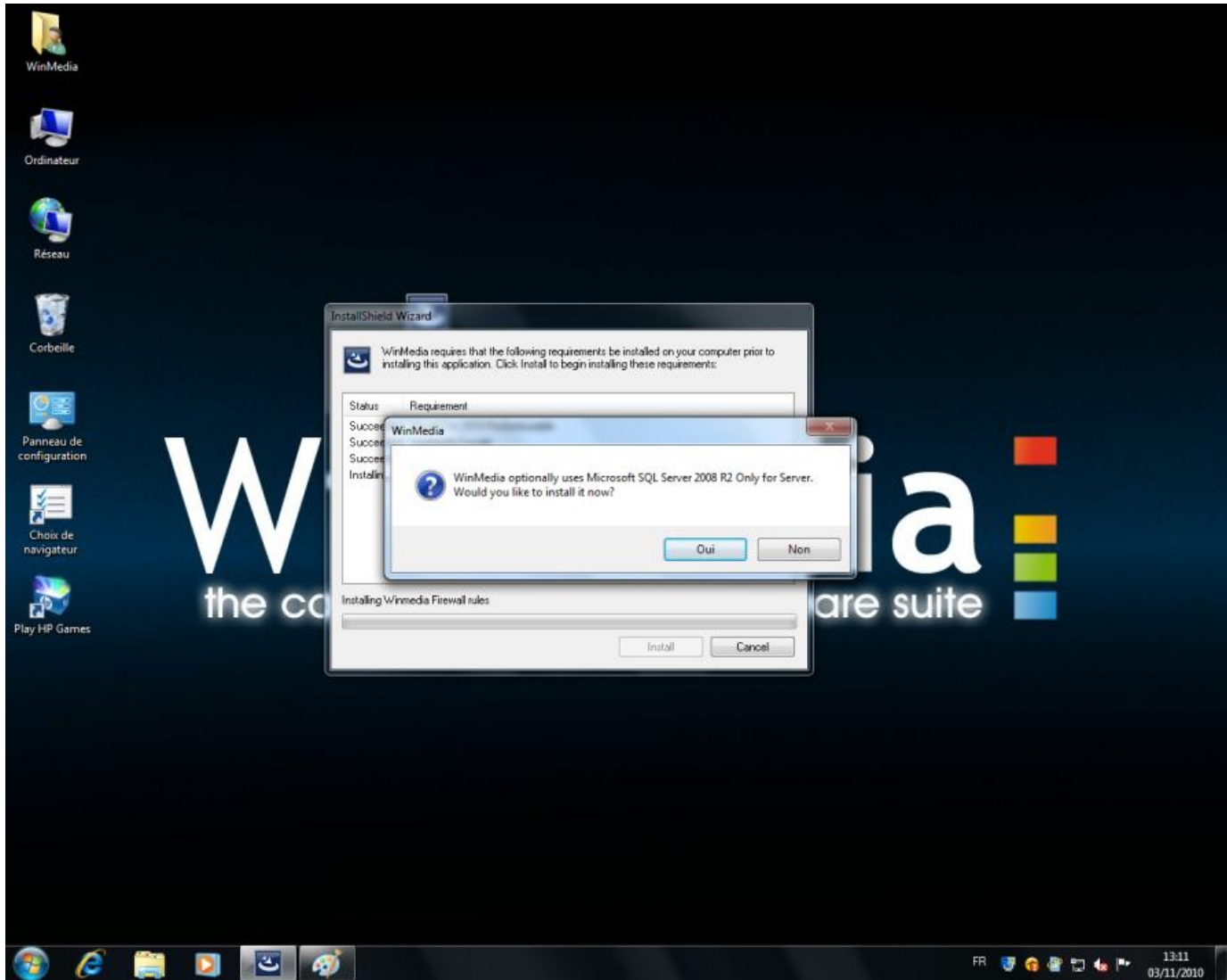
4 - Installation of WinMedia firewall rules

To allow SQL queries of WinMedia over your network we need to open the necessary port on the computers.

Execute the WinMedia firewall rules script to open it automatically.



5 - Installation of WinMedia SQL Server 2008 R2



NB : install this package ONLY on the Server computer. If you are using this package on a CLIENT computer, answer NO to that question.

-1- click on next to accept all default options

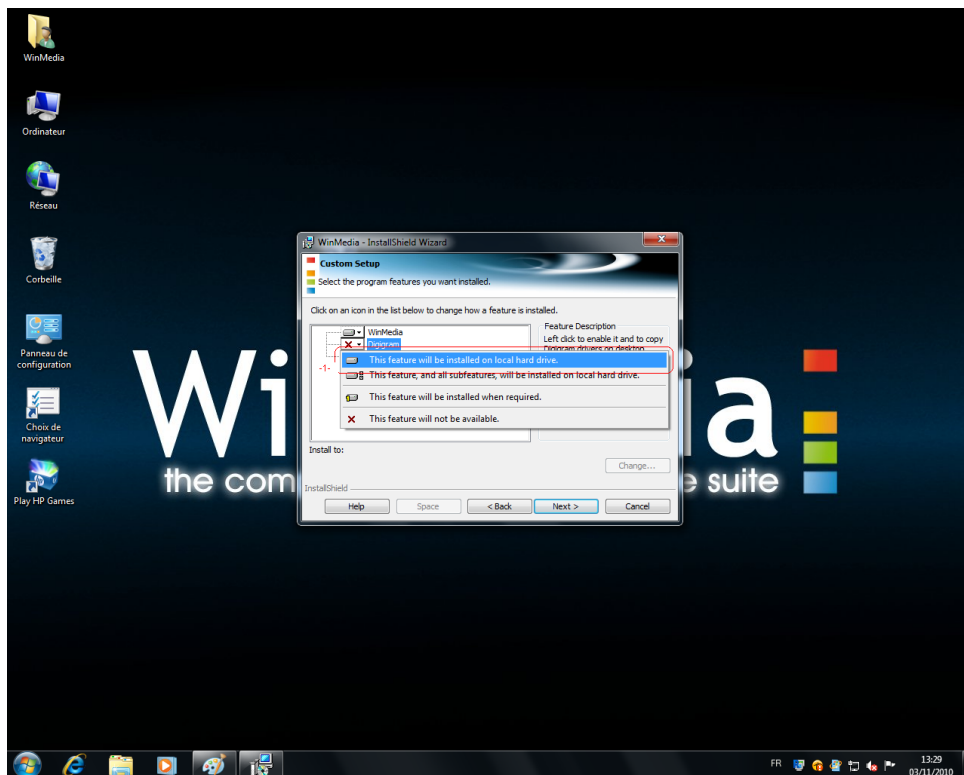
-2- until the end of the installation process.

We finish the installation process of the WinMedia package and we will come back to the configuration of SQL manager

6 - WinMedia installation



Click on Next to proceed with the installation of WinMedia software



-1- Make a right click on Digigram and select « This feature will be installed on local hard drive », the install wizard will copy the latest Digigram drivers on a « WinMedia installation files » folder on the computer's desktop.

Make a right click on SQL TOOLS and select « This feature will be installed on local hard drive », the install wizard will copy the SQL configuration scripts drivers on a « WinMedia installation files\SQL tools » folder on the computer's desktop.

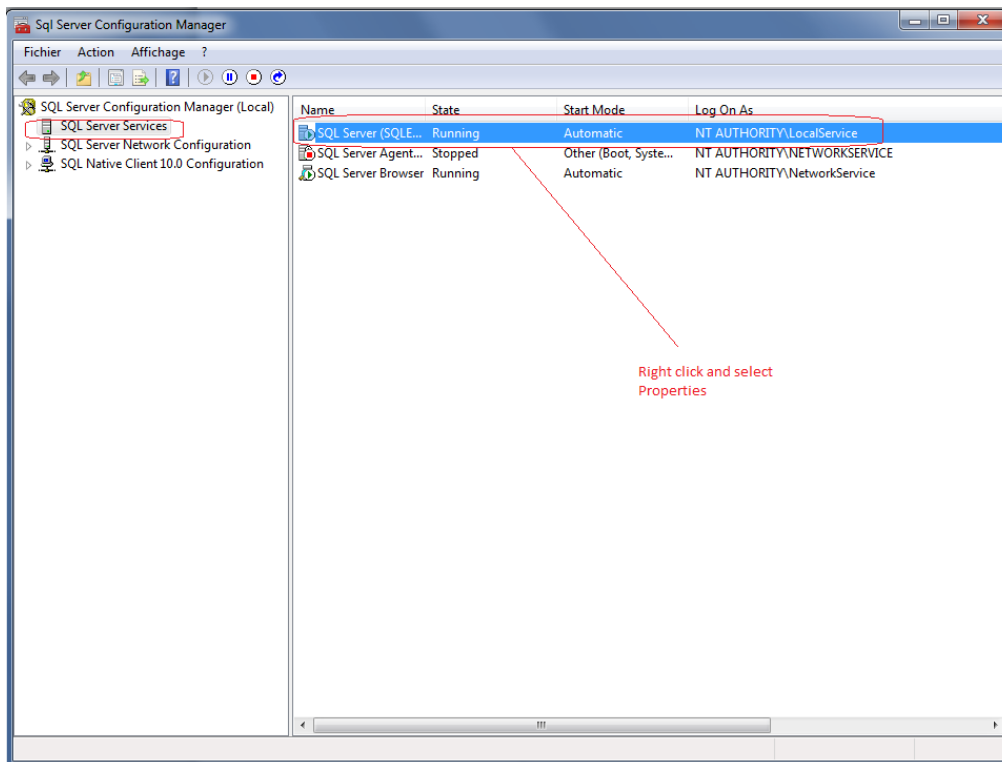
Then click on Next,

Accept all the default options until the final screen and Click on « Finish to close the installation wizard process.

II - SQL Server configuration

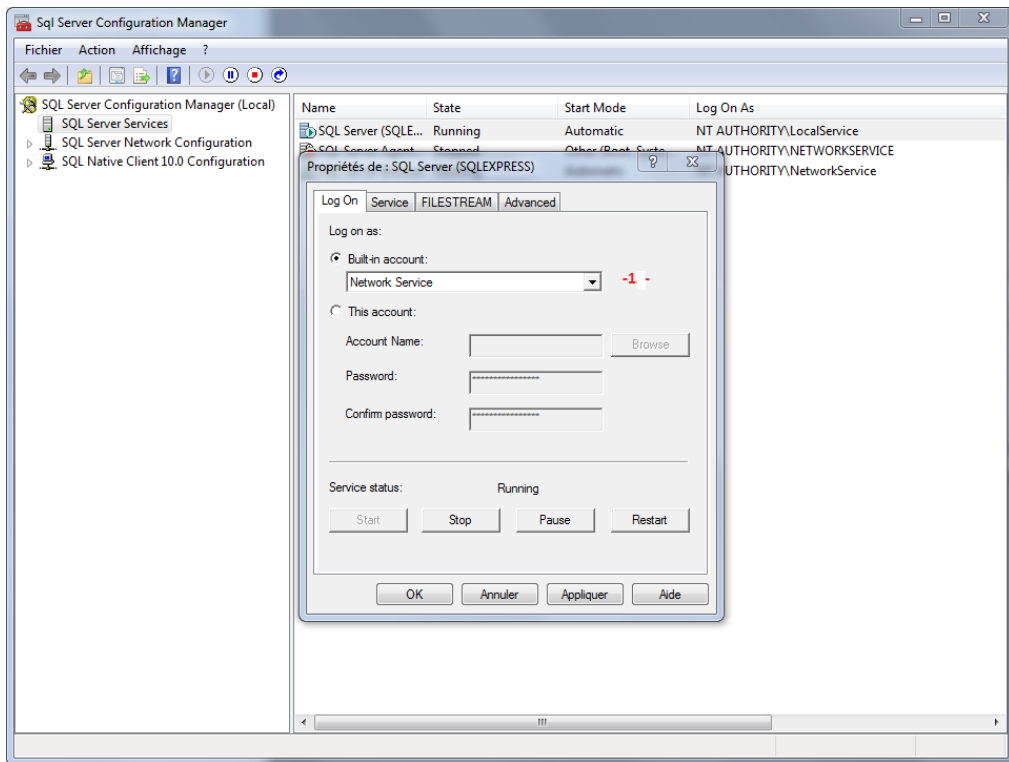
1 – SQL Server Configuration Manager

Go to all programs> Microsoft SQL Server 2008 R2> Configuration Tools >SQL Server Configuration Manager_In the right panel make a right click on on SQL Server Browser >Properties



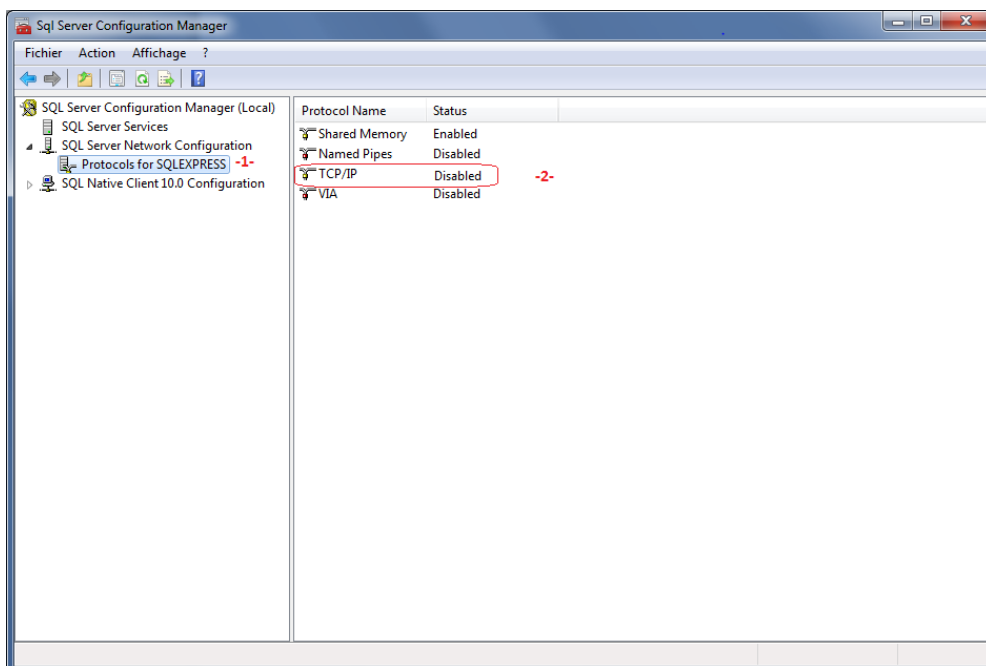
In the "Log on" tab> scroll down the Built-in account menu and select "Network Service"; click on Apply and Ok

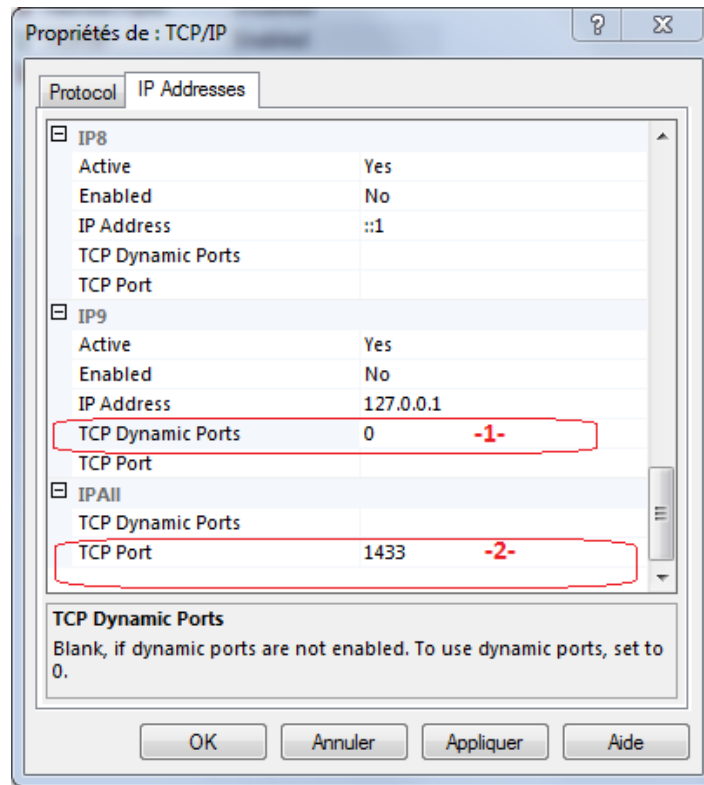
Say "No" for restarting the service now



2 - SQL Network configuration

- 1- In the right panel; double click on on SQL Network Configuration
- 2- Make a right click on TCP\IP > Properties





-1- In all the fields «TCP dynamic Ports» delete the '0' value

-2- In the section "IP ALL" in the field « TCP Port » insert the value '1433'

Click on apply and ok

Say "No" for restarting the service now

3 - SQL script

We will execute the script '**config login sql**' located in
C:\Username\Public\Desktop\WinMedia installation files\Sql files

Double click the script 'config login sql' > It opens SQL studio Manager 2008 R2>click on Connect> Press F5 on the keyboard or click on the Execute Button.

That script creates and configures the WinMedia login to the Database

The 2 others scripts are for support use, you don't need to execute them.

4 - SQL Authentication

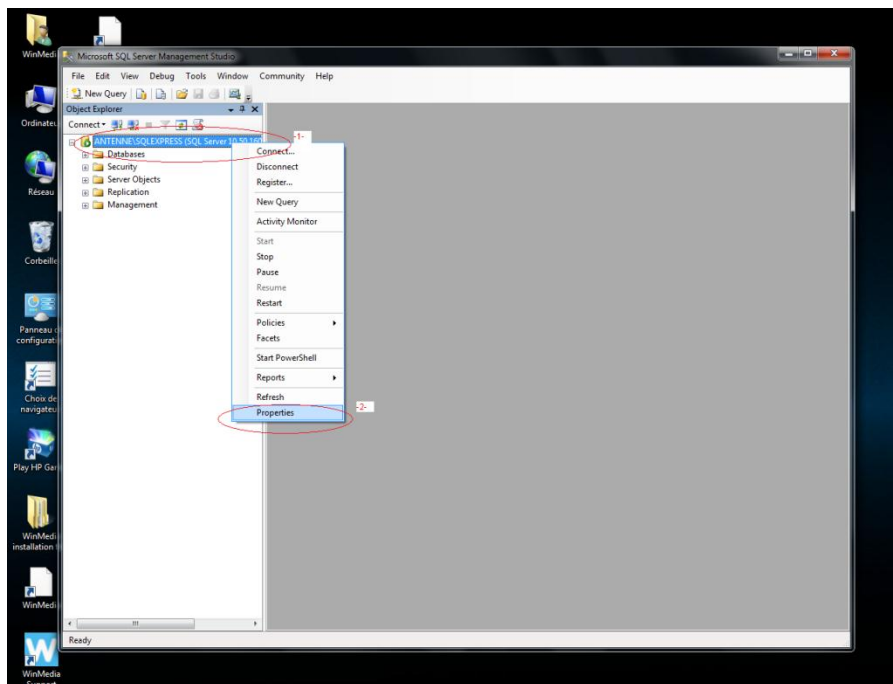
Go to all programs>Microsoft SQL Server 2008 R2> SQL configuration Manager
> SQL Server Management Studio Manager

Click on 'Connect'



-1- In the left panel, make a right click on the engine name (name of computer\SQLSERVEREXPRESS)

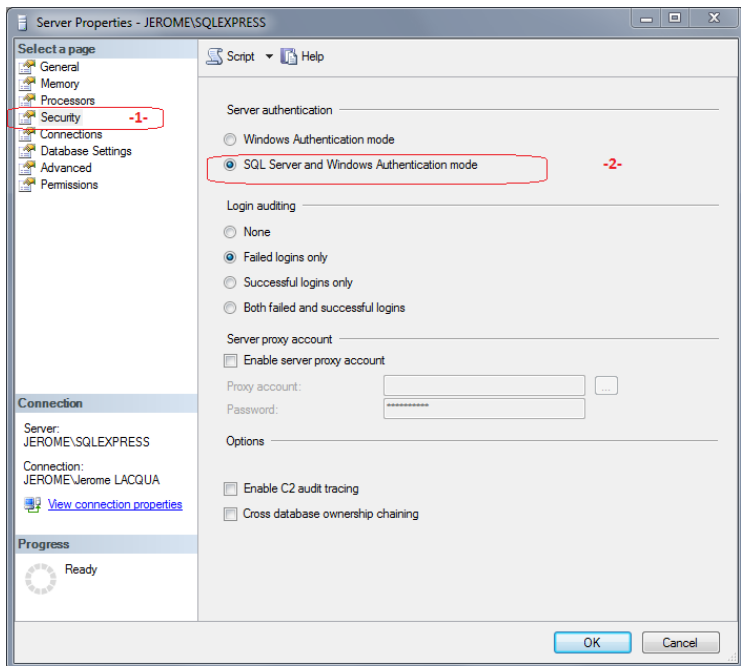
-2- then Properties



-1- Select 'Security'

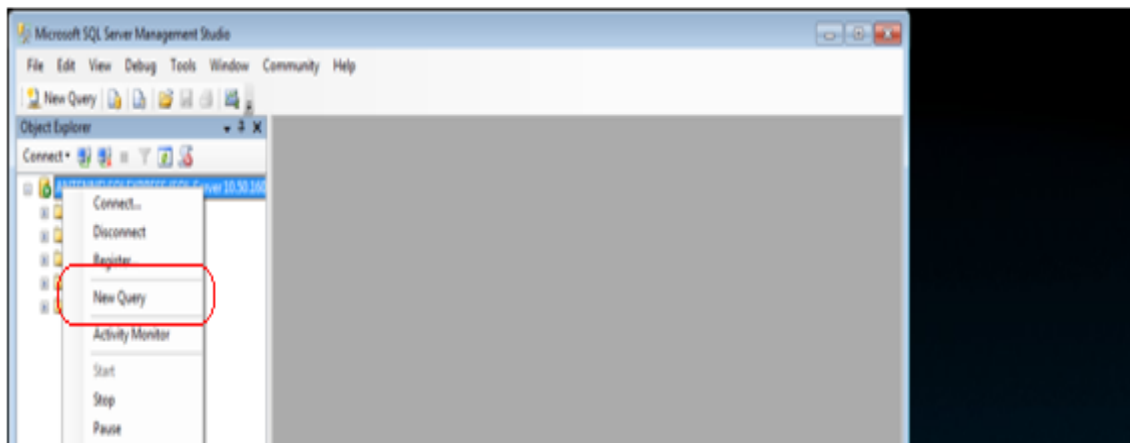
-2- Sélectionner 'SQL Server and Windows Authentication mode'

-3- Cliquez sur 'Ok'



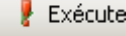
5 – Open Rowset activation

Make a right click on the SQL Server engine name and select 'New Query'



In the right panel, copy and paste the following text:

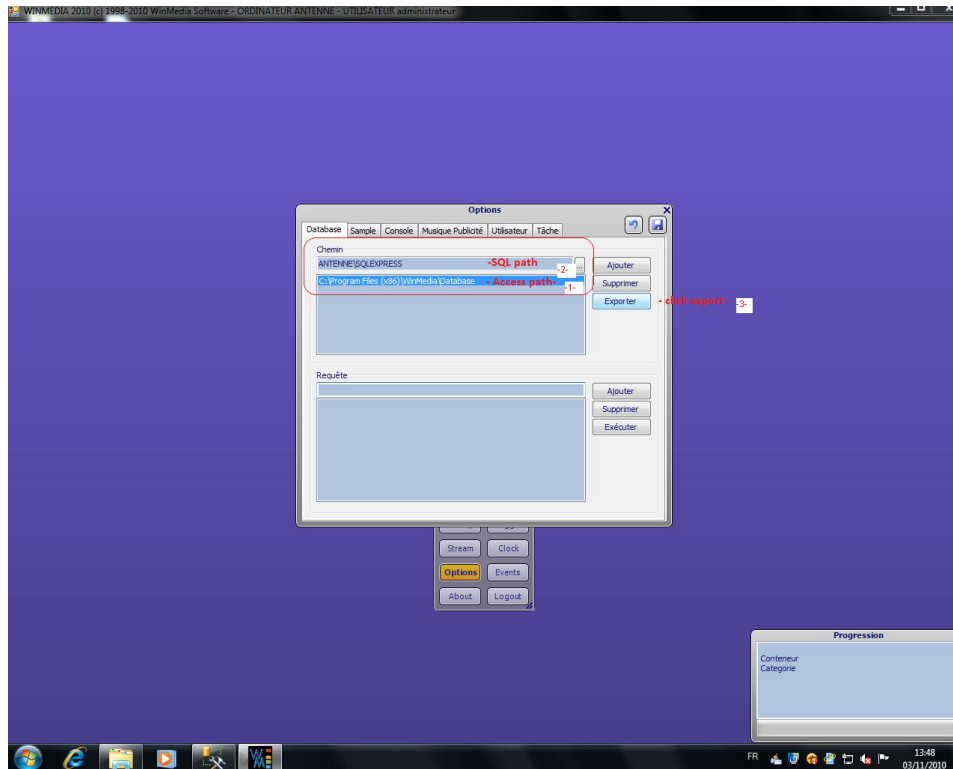
```
EXEC sp_configure 'show advanced options', 1;  
GO  
RECONFIGURE;  
GO  
EXEC sp_configure 'Ad Hoc Distributed Queries', 1  
GO  
RECONFIGURE;  
GO
```

Then click on 'execute'  button to run the query Last step, To finish we need to restart the SQL server In the left panel, make a right click on the engine name (name of computer\SQLSERVER) and select 'Restart' The configuration of SQL Server 2008 with WinMedia is finished.

6 - Create a WinMedia Database in the SQL Server 2008

To create a WinMedia Database > Launch WinMedia Software then go to:

Dock > Options > Database :



- 1-** Select the default path (Access path)
- 2-** Input the SQL Path, following the syntax: Name of computer\SQLSERVER
- 3-** Click on the export button, you will see in the bottom right corner a progression bar confirming that the configuration is correct.

Then Click on the Add button, select the access path and click on delete

Click on Save button and close the option Box

For any question on that document:

WinMedia support +33 4 94 102 148 or support@winmedia.org